

# Installation instructions for PZ4AL- 00838- 00

## LEXUS - IS 250

### Under Run Protective Shield engine bay



Model Year: 2005

Vehicle Code: GSE20L-AETLHW

Part Number: PZ4AL-00838-00



Weight: 12.8 kg

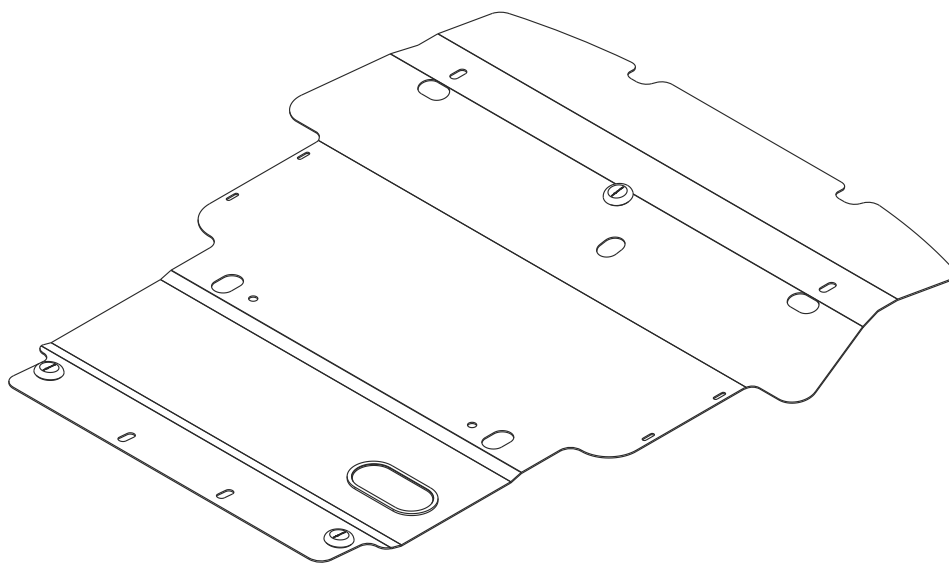


Installation Time: 20 min

Manual reference number: AIM 002 090-0

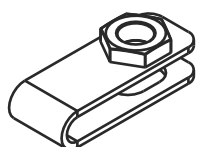
Part number: PZ4AL-00838-00

**A**



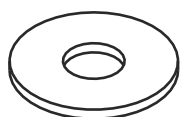
PZ4AL-08330-60

**B**



4 x

**C**



4 x Ø10

**D1**

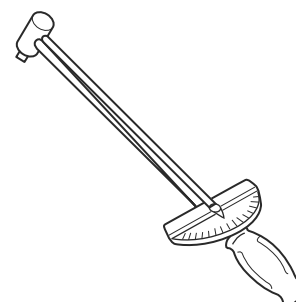
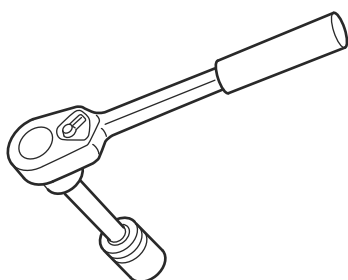


2x M10X30

**D2**



2x M10X40



Part number:  
PZ4AL-00838-00

Issue:  
0

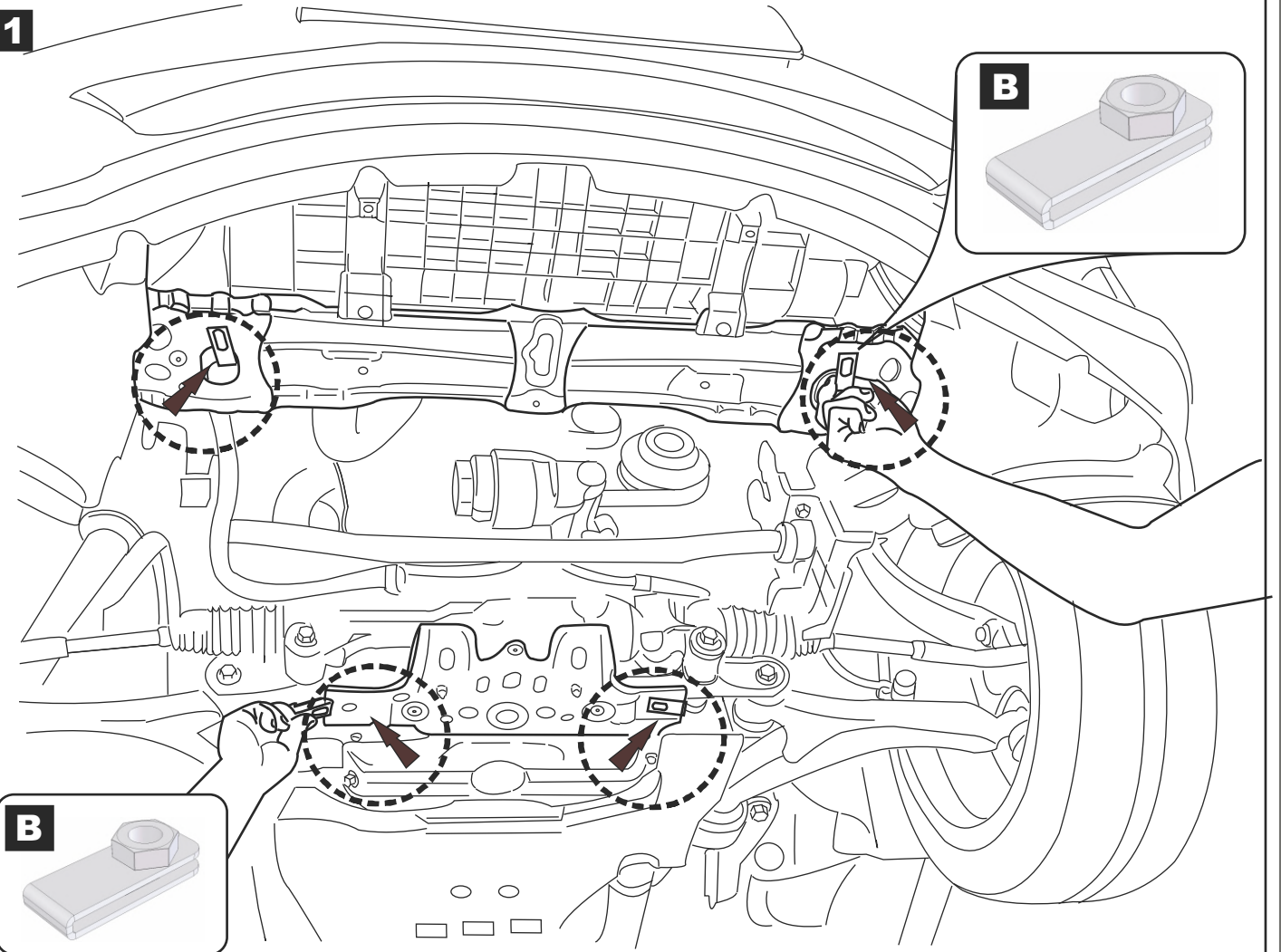
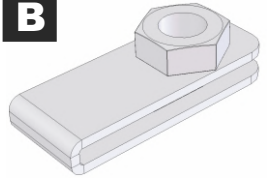
Date:  
19/12/06

Manual reference number:  
AIM 002 090-0

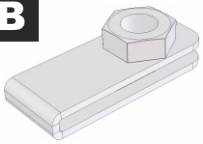
Page:  
2/3

**1**

**B**



**B**



**2**

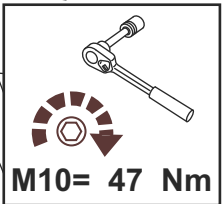


**C**

**D2**

**C**

**D1**



M10= 47 Nm

